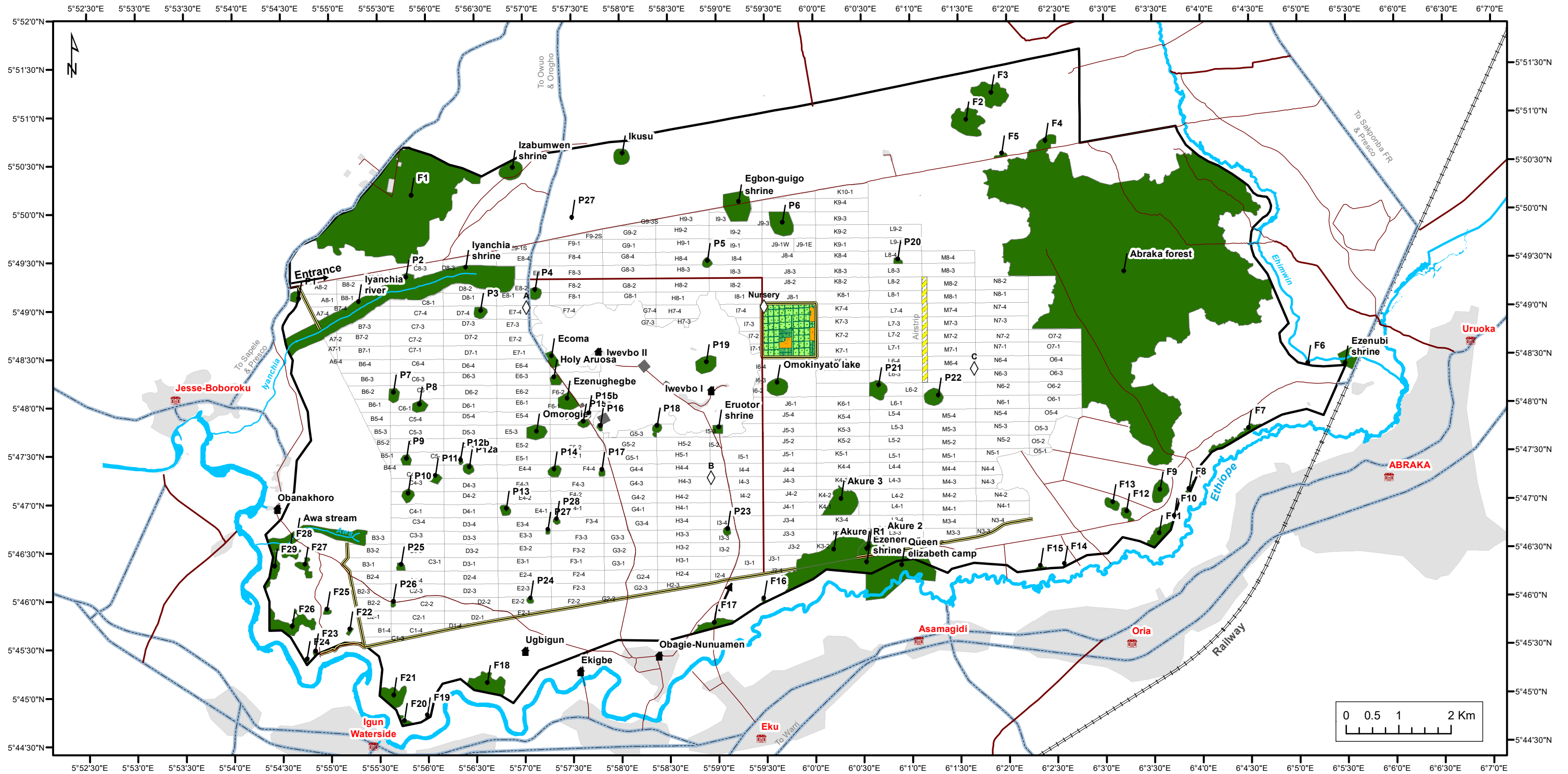


Subsidiary : PRESCO Pic
 Location : Sakponba
 Department : HSE
 Theme : Conservation
 Map type : Official
 Code : PRE-SAK-HSE-CON-22-1
 Scale : 1 : 75 000

SAKPONBA - Conservation areas (2654 ha)



Legend

- | | | | | | |
|--|------------------------------|--|-----------------|--|-------------------|
| | Sakponba estate (16,854 ha) | | Infrastructures | | Minor roads |
| | Conservation areas (2654 ha) | | Airstrip | | Tracks |
| | Nursery (76 ha) | | Trenches | | Cities & villages |
| | Oil well & slabs | | Major roads | | Communities |

Endorsed by GSM		Acknowledged by CAO		Acknowledged by COO	
Date	Signature	Date	Signature	Date	Signature
2022-02-21		22-02-2022		22020222	
References		Sources		QR code (Internet required)	
Author : Timothy Ojamiruaye Date : 2/21/2022 Datum : WGS 1984 UTM Zone 31N Format : A3 color		Data sources : SEPRET LIDAR (2015), Google Earth (2019), ABS (May 2020), CAO, CRO and groundtruth verification Shapefiles available on the Sharepoint		How to download the map ? - Download Qr Code Reader app - Open the app > Scan the code - Map > Click the 3 dots > Save	

Note : Conservation within the concession